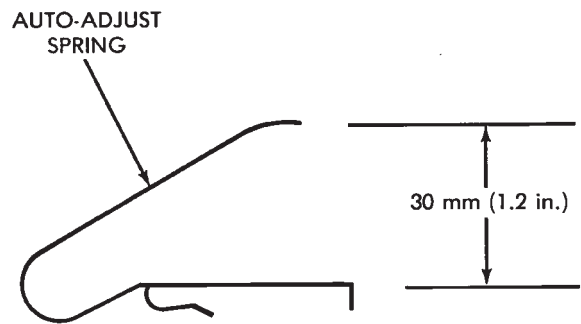


The cause of this noise in most cases is the clutch cable auto-adjust spring being below design load specifications. To correct the problem, bend the auto-adjust spring to bring it back to specifications or replace the spring (Fig. 1).

The auto-adjust spring is located on the back of the clutch pedal.

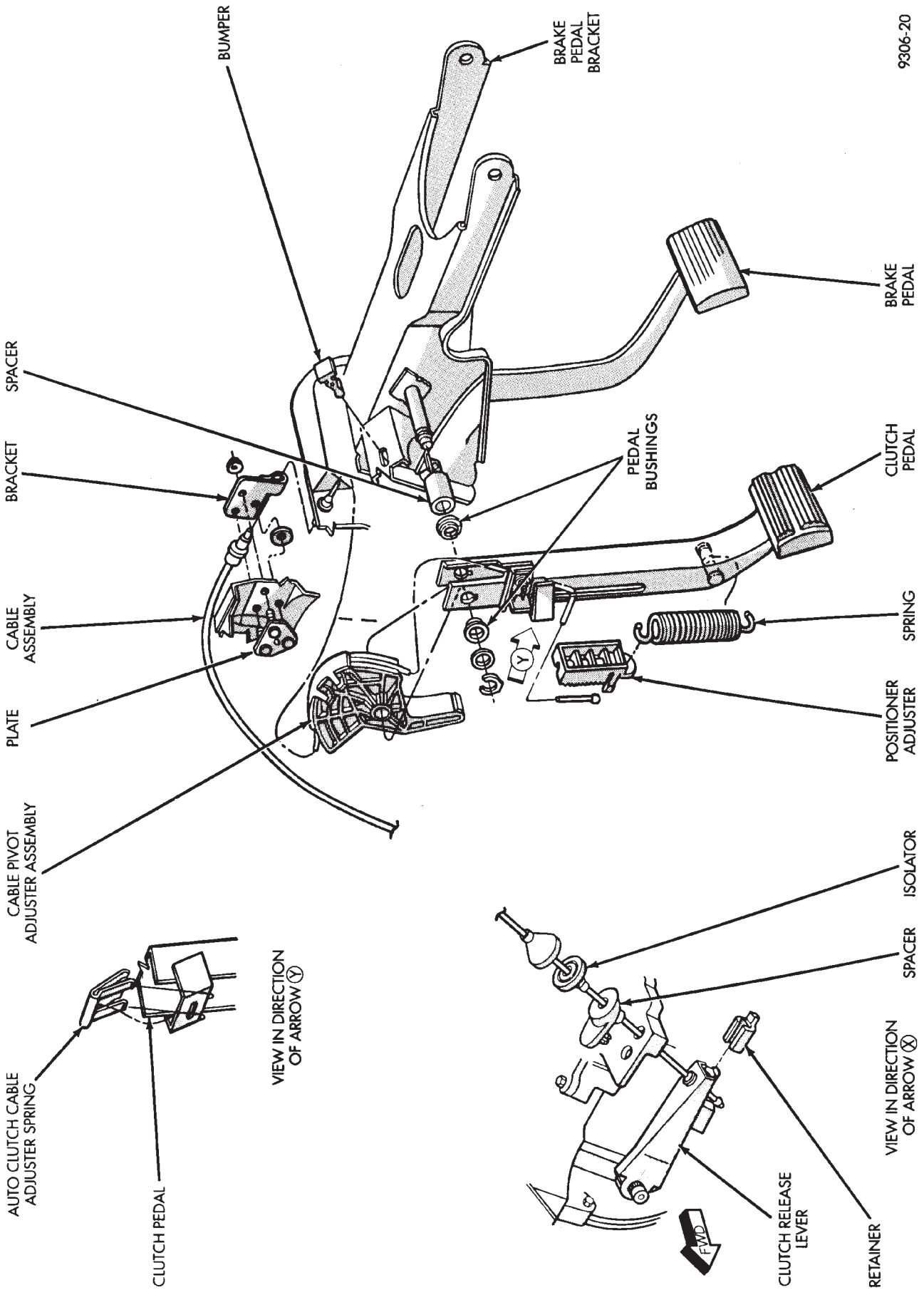
CLUTCH CABLE REPLACEMENT

- (1) Remove retainer from clutch release lever at transaxle by pulling on the tail of the ball stud (Fig. 2).



9306-12

Fig. 1 Clutch Cable Auto-Adjust Spring



9306-20

Fig. 2 Self-Adjusting Clutch Release Mechanism