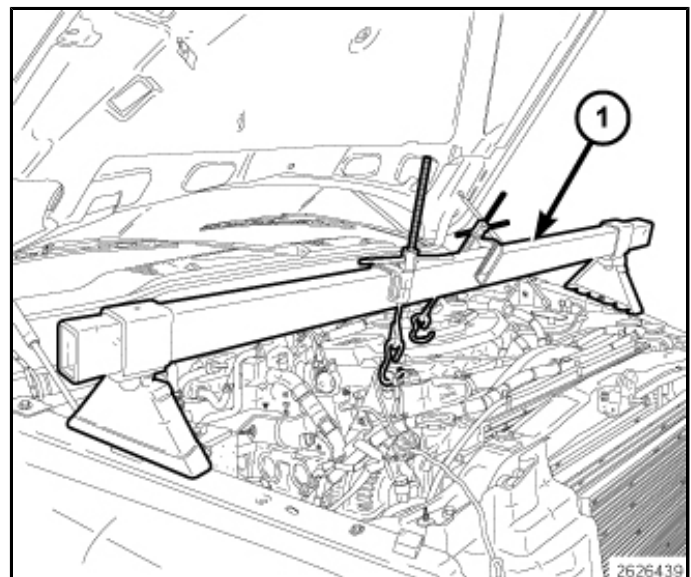
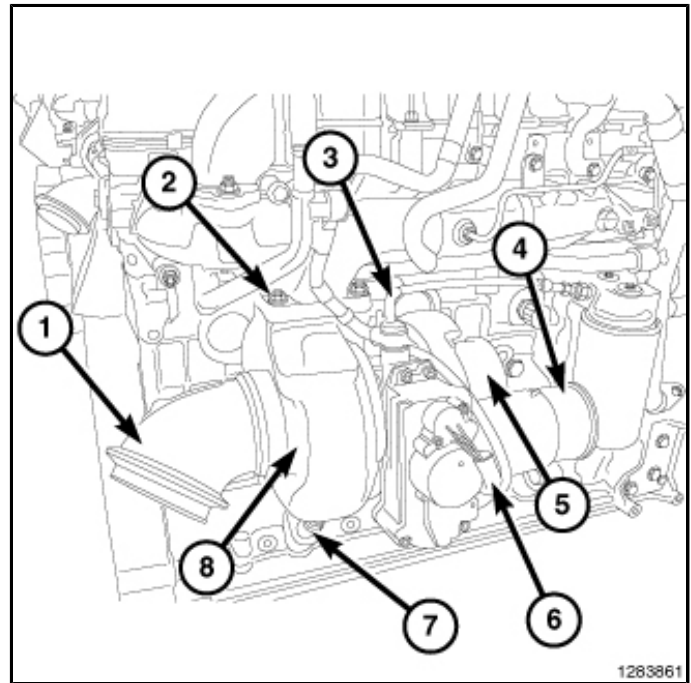
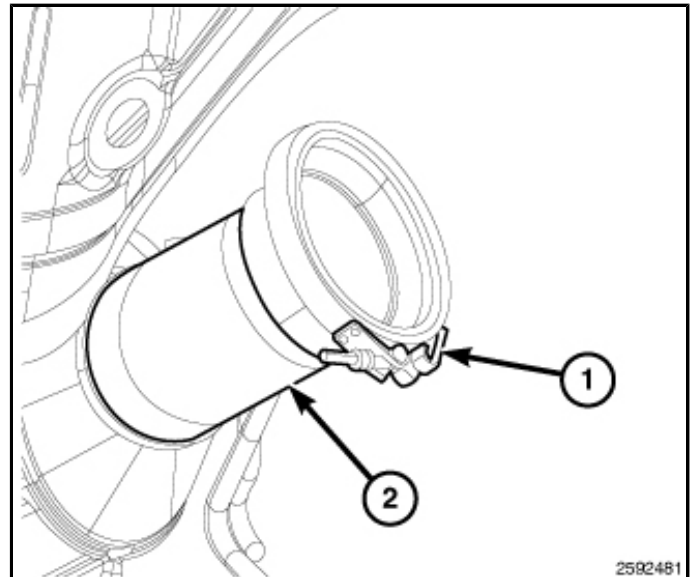


REMOVAL

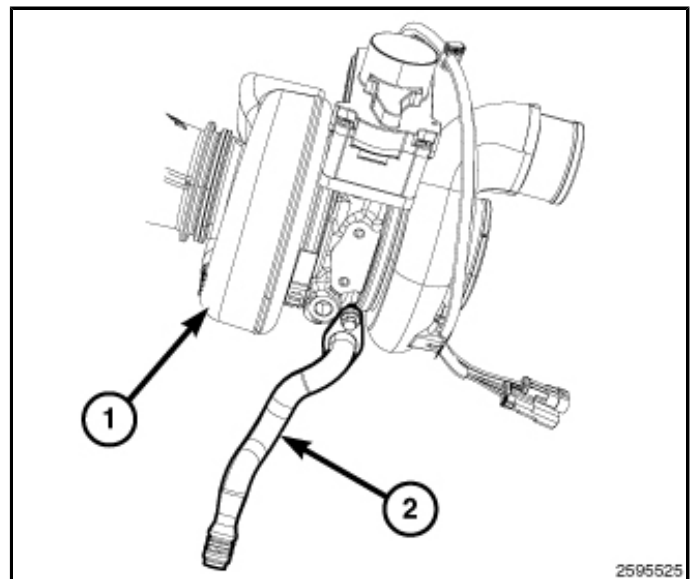
1. Disconnect the negative battery cable on both batteries.
2. Disconnect and re-position the right hand side positive battery cable.
3. Drain the coolant from the radiator and engine.(Refer to 07 - Cooling - Standard Procedure)
4. Remove the air filter housing. (Refer to 09 - Engine/ Air Intake System/AIR CLEANER - Removal)
5. Disconnect the crankcase vent hose at the turbocharger air intake.
6. Remove the intake air tube at the turbocharger (5).
7. Remove the charge air cooler inlet tube at the turbocharger inlet (4).
8. Disconnect the turbocharger speed sensor electrical connector.
9. Disconnect the turbocharger actuator electrical connector (6).
10. Remove the turbocharger oil pressure line (3).
11. Remove the turbocharger coolant lines at the engine block and turbocharger.
12. Remove the viscous fan and fan shroud, (Refer to 07 - Cooling/Engine/FAN, Cooling - Removal).
13. Remove the right side wheelhouse splash shield, (Refer to 23 - Body/Exterior/SHIELD, Splash - Removal).
14. Lower the vehicle.
15. Install the engine support fixture tool [8534B](#) (1).
16. Remove the right hand side engine mount, (Refer to 09 - Engine/Engine Mounting/INSULATOR, Engine Mount - Removal).



17. Raise and support the vehicle.
18. Remove the exhaust steady rest bracket from transmission.
19. Remove the V-clamp (1) from the turbocharger exhaust outlet.



20. Remove the turbocharger drain tube (2) at the turbocharger (1).
21. Remove the turbocharger drain tube from the cylinder block.
22. Lower the vehicle.
23. Remove and re-position the grid heater relay from the battery tray.
24. Using Tool 9866 , remove the turbocharger to exhaust manifold mounting nuts.
25. Remove the turbocharger (1) from the vehicle by lifting from the top of the engine compartment.
26. Clean the turbocharger mating surfaces.



27. Inspect the turbocharger for damage, if necessary replace the turbocharger, (Refer to 09 - Engine/ Turbocharger System/TURBOCHARGER - Inspection).